



DALI KORE

STATE-OF-THE-ART LOUDSPEAKER TECHNOLOGY

MANUAL

EN



Contents

1. Introduction	2
2. KORE Accessory Kit	3
3. Unpacking your speakers	4
4. Positioning your speakers	7
5. Connecting your speakers	8
6. Using your speakers	10
7. Cleaning and maintenance	10
8. Disposal	11
9. Specifications	12

1. Introduction

Thank you for choosing the DALI KORE.

DALI is renowned throughout the world for continually striving to enhance the experience of music in the home, and the DALI KORE is the ultimate expression of that endeavour.

The DALI KORE is a high performance speaker that performs best when installed correctly. We therefore recommend that you explore this manual thoroughly before unpacking, installing or using your speakers.

The DALI KORE is extremely heavy, so to minimise the risk of damage or personal injury, please carefully follow the unpacking instructions.

We hope you enjoy your DALI KORE speakers for many years to come.

2. KORE Accessory Kit

The DALI KORE Accessory Kit contains the tools and accessories needed to install and optimise the performance of your speakers. The contents of the Accessory Kit are shown below.

! If you plan to relocate your DALI KORE speakers in the future, we recommend that you store the packaging materials.

Diagram 1. Contents of the Accessory Kit

Literature:

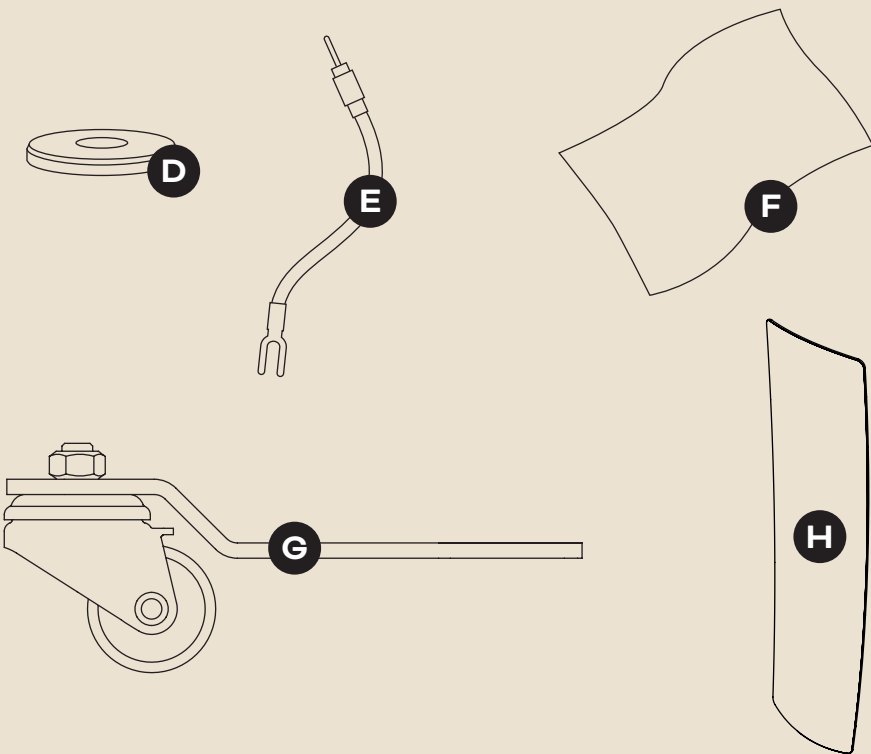
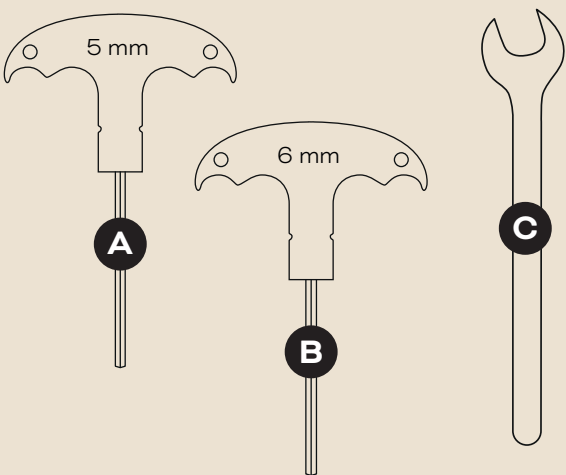
- 1 × DALI KORE Manual
- 1 × DALI KORE Brand Book
- 1 × DALI KORE Inlay Card

Tools:

- 1 × 5 mm Allen key **A**
- 1 × 6 mm Allen key **B**
- 1 × 10 mm spanner **C**

Accessories:

- 8 × Magnetic spike feet **D**
- 4 × Terminal jumpers **E**
- 1 × Cleaning cloth **F**
- 8 × Transit wheels (attached to the bottom of the speaker) **G**
- 2 × Magnetic front grille (located in the shipping crate) **H**



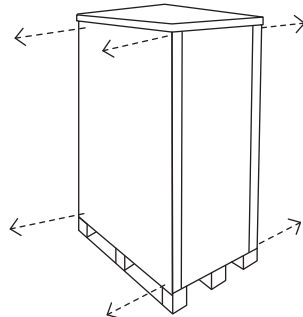
3. Unpacking your speakers

We recommend unpacking your DALI KORE speakers near where you intend to use them. DALI KORE speakers are fitted with transit wheels to make it easier to move them around. The transit wheels should remain fitted until the speakers are in their final working positions. Section 4 describes how to position your speakers.

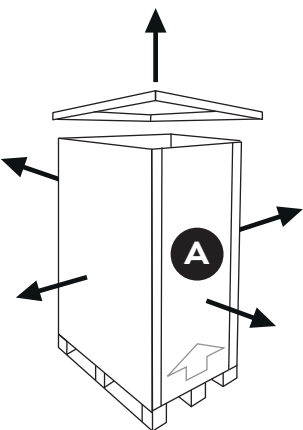
Unpacking and installing your DALI KORE speakers should be carried out by a minimum of two people.

! If you need assistance with the installation, please contact your local DALI dealer.

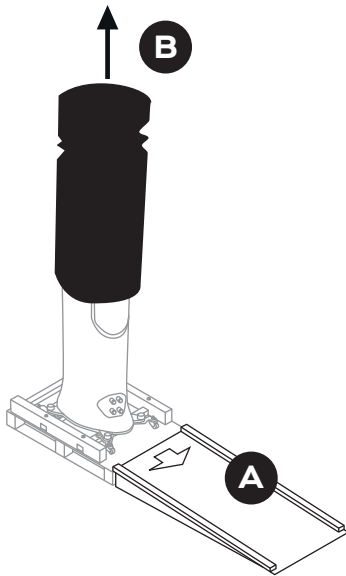
1 Remove the screws at the top and bottom of the shipping crate.



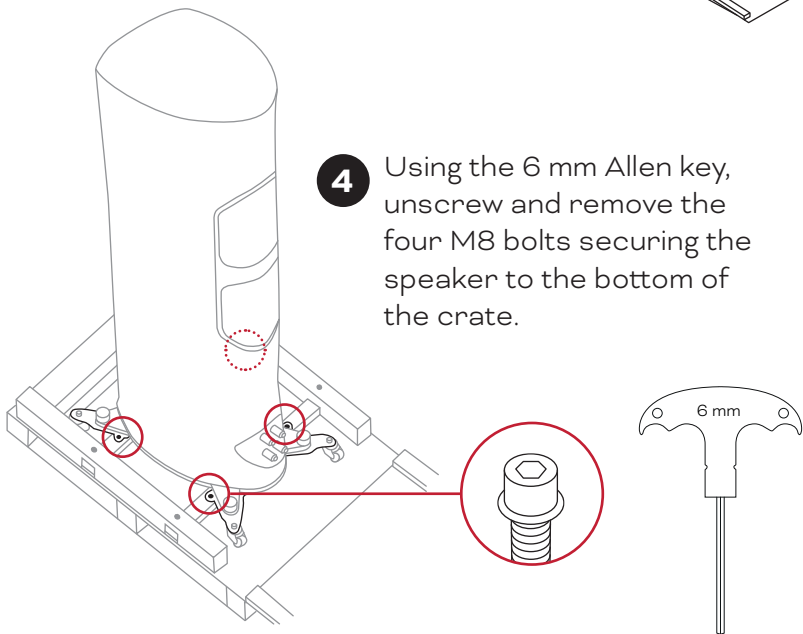
2 Remove the top and sides of the shipping crate. The rear panel A of the crate will be used as a ramp.



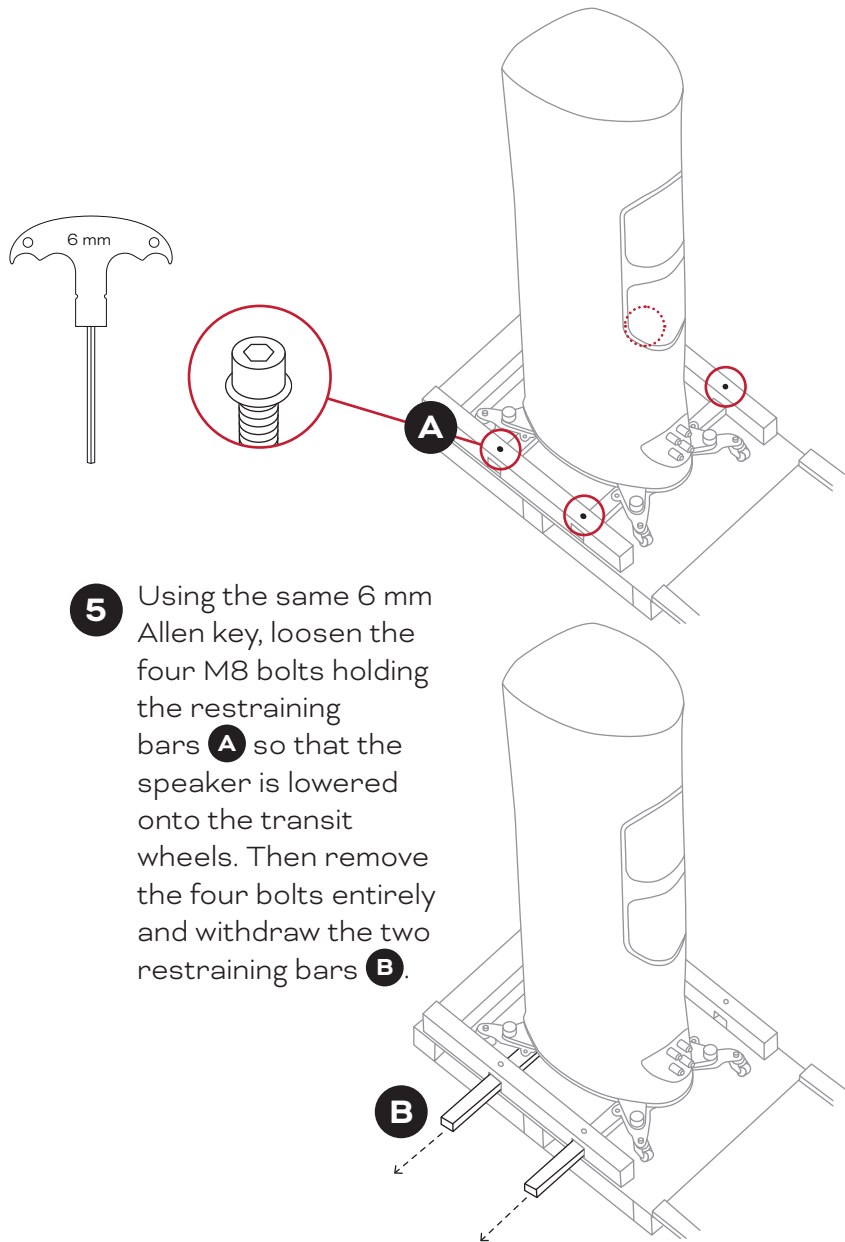
3 Position the ramp A behind the speaker. Remove the protective cover B.



4 Using the 6 mm Allen key, unscrew and remove the four M8 bolts securing the speaker to the bottom of the crate.

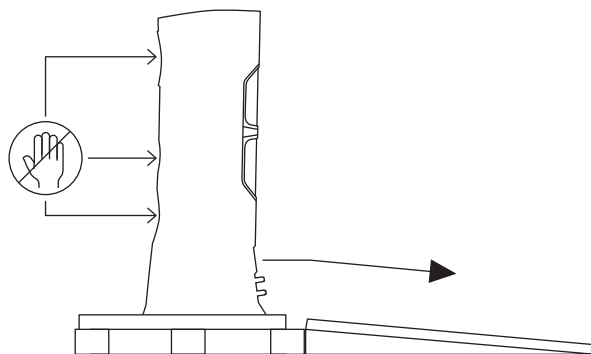


5 Using the same 6 mm Allen key, loosen the four M8 bolts holding the restraining bars A so that the speaker is lowered onto the transit wheels. Then remove the four bolts entirely and withdraw the two restraining bars B.

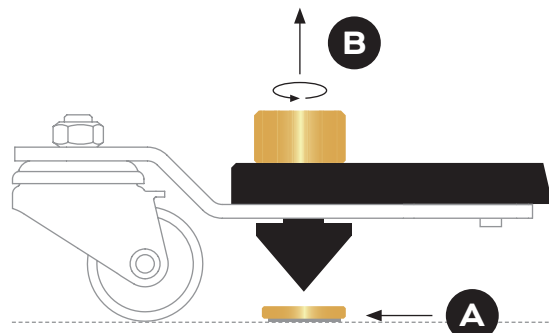


6 Carefully roll the speaker down the ramp. Once your DALI KORE speaker is unpacked from its shipping crate, you can push it into its listening position.

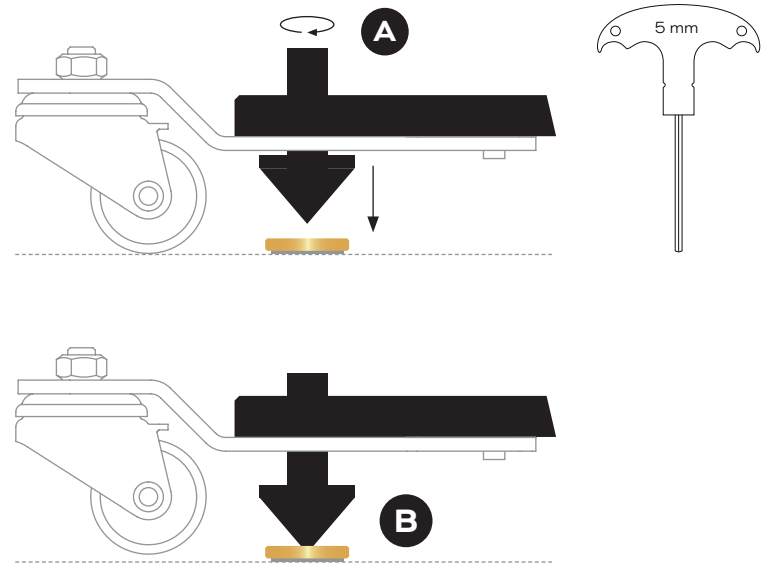
! Avoid touching the drivers.



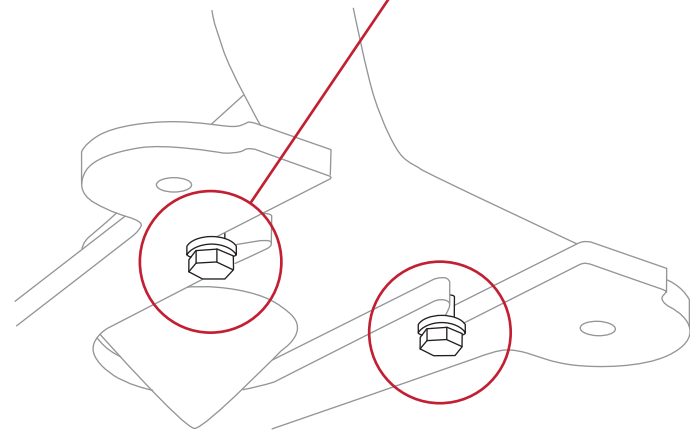
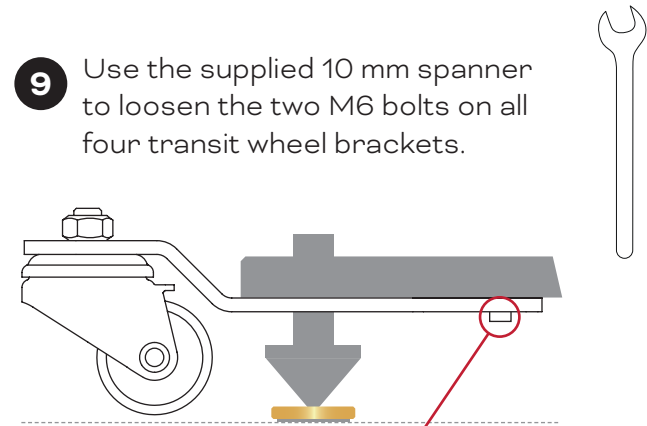
7 Position the magnetic spike feet underneath each spike A then unscrew and remove the golden thumbscrew B located above the spikes.



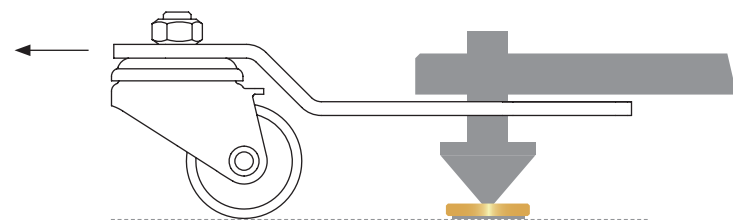
8 Use the 5 mm Allen key to lower the spikes A until the transit wheels are raised from the floor and the speaker is supported on the spikes B.



- 9** Use the supplied 10 mm spanner to loosen the two M6 bolts on all four transit wheel brackets.



- 10** Remove the transit wheel brackets in the direction shown below.



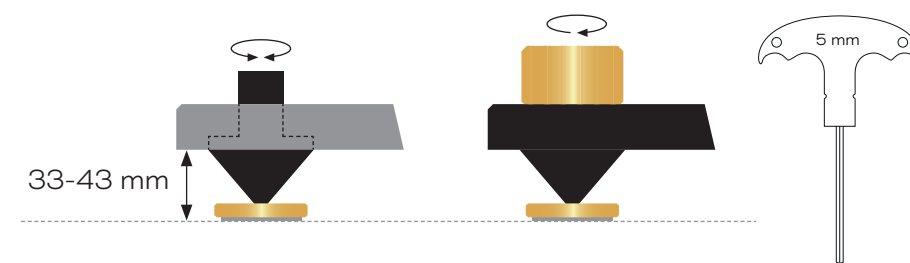
- 11** Adjust the height of the spikes using the 5 mm Allen key.

The spike height should be adjusted to leave a gap of between 33 mm and 43 mm from the floor to the underside of the speaker base.

The spike heights can be adjusted to ensure the speakers are vertical and stable.

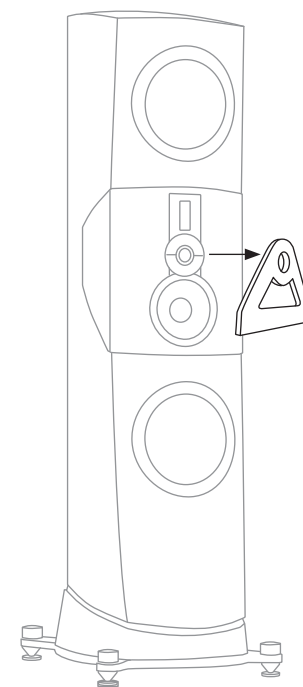
When you've finished adjusting the spike heights, screw the four thumbscrews back on.

The diagram below shows how to adjust the height of the DALI KORE feet.



Repeat the unpacking process for the other speaker.

- 12** Remove the dome protection before use.



4. Positioning your speakers

In this section, we guide you through placing your speakers in your listening room. You'll likely need to make adjustments as you become more familiar with the character and performance of your new speakers, so if you need to move your speakers, first reattach the transit wheels by following steps **11** to **8** in the previous section in reverse order.

The sound of any speaker is influenced by the space and position in which it's located. Even small changes in position can significantly influence the sound. Changes to a room, such as laying a rug or closing a pair of heavy curtains, can also have an effect.

Position your DALI KORE speakers 3 to 5 metres apart, well away from corners in the room and 1 to 2 metres from the rear wall. The distance between the speakers and the rear wall is where you're likely to make most adjustments as you become more familiar with their performance in your listening space.

The primary listening position should be located centrally between the speakers, at approximately the same distance as that between the speakers (Diagram 1).

As DALI speakers are designed to offer wide acoustic dispersion, we recommend that you avoid angling (or toeing-in) your DALI KORE speakers towards the

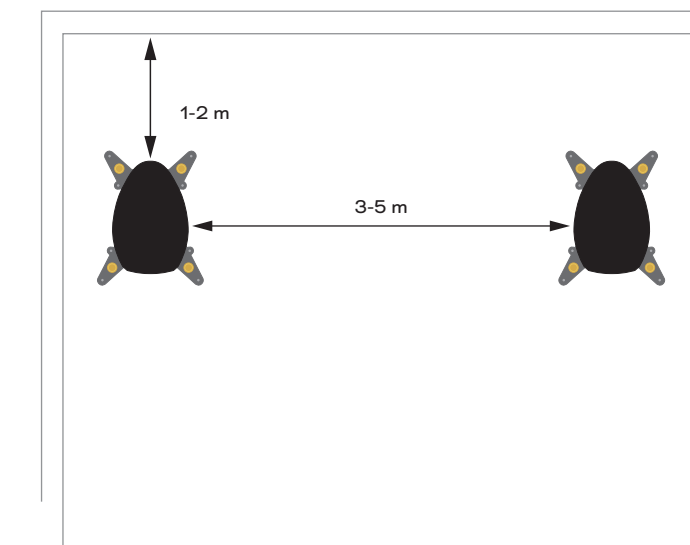
primary listening position. You can read more about the DALI wide dispersion philosophy in the DALI KORE White Paper.

Try to position each DALI KORE speaker in an acoustically similar environment. Curtains, windows, bookcases and other nearby objects can all affect a speaker's acoustic performance.

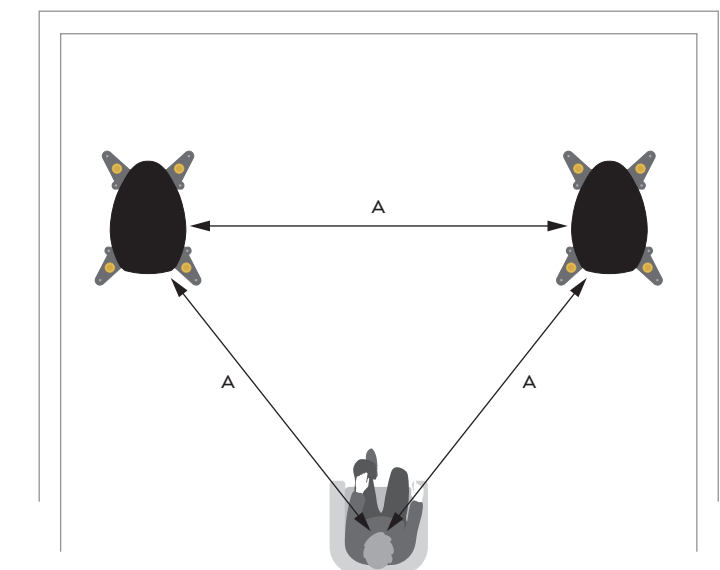
If you move your DALI KORE speakers closer to a wall boundary, the low frequency elements of your music are likely to become more prominent. Although this might initially appear to improve the sound, it will likely be at the expense of musical clarity and accuracy.

Diagram 1: Positioning guidelines

Positioning your speakers



Finding the optimal listening position



5. Connecting your speakers

Each DALI KORE speaker is fitted with two pairs of binding post terminals on the connection panel located on the rear face of the plinth. The upper pair of terminals connects to the Balanced Drive SMC midrange and EVO-K Hybrid Tweeter module, while the lower terminal pair connects to the Balanced Drive SMC bass drivers.

Included in the Accessory Kit are four Terminal Jumpers, which can be used to connect the upper and lower pairs of binding posts, so that only a single twin-core speaker cable is required to connect each speaker to a single power amplifier. If the terminal jumpers are removed, two twin-core speaker cables will be needed, sharing the output from a single power amplifier in a “bi-wire” format.

Diagram 2 shows single-wire, bi-wire and bi-amp connection formats.

The specification and type of speaker cables you use to connect your DALI KORE speakers can influence their audio performance. For best results, use high quality cable with a minimum conductor cross-sectional area of 2.0 mm². Each speaker cable should be of similar length and less than 20 metres long. Your DALI KORE retailer will be happy to offer advice on the best speaker cable for your setup.

When connecting your DALI KORE speakers to an amplifier, begin by connecting the speaker cables to the speaker terminals. Ensure that the cable wires marked “positive” or coloured red are connected to the positive (red) speaker terminals, and “negative” or black cable wires are connected to the negative (black) speaker terminals.

The DALI KORE connection terminals can accommodate stripped cables, 4 mm plugs or cable spades.

Here’s how to connect each type:

- Stripped cables: Unscrew the speaker terminals fully. Twist the stripped cable strands together, ensuring there are no stray strands, and insert the cable into the holes through the terminal posts. Finally, tighten the terminals down onto the stripped cable securely. We recommend checking the terminals for

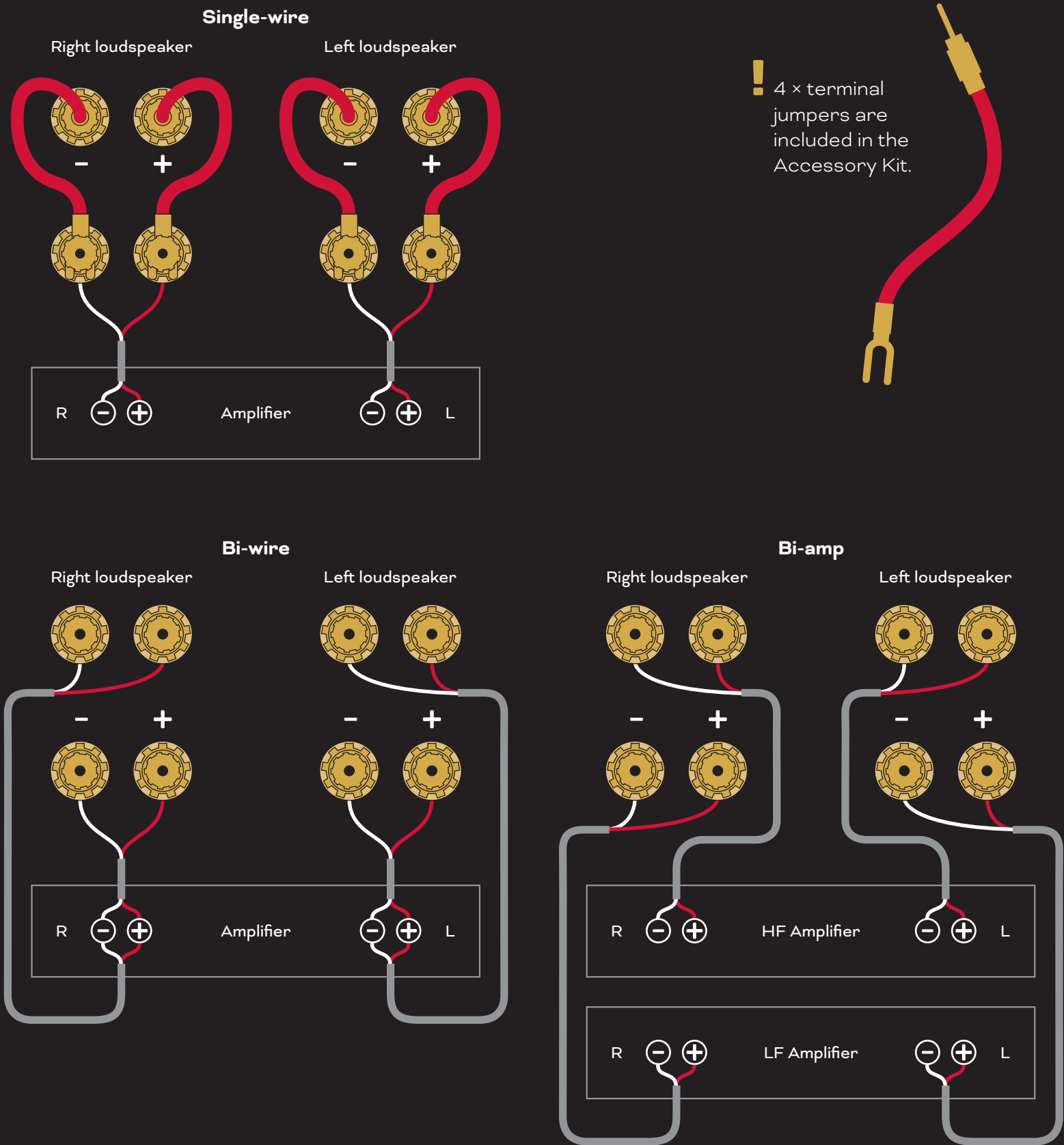
tightness soon after you first tighten them and periodically thereafter.

- 4 mm plugs: Insert the plugs directly into the end of the speaker terminals. The terminals tighten around the plug to strengthen the connection and minimise the chance of mechanical buzzing.
- Cable spades: Fully unscrew the speaker terminals and position each cable spade arm either side of a terminal post. Secure the cable spades by tightening the terminals. We recommend checking the terminals for tightness soon after you first tighten them and periodically thereafter.

With cables connected to your DALI KORE speakers, they can now be connected to the amplifier’s output terminals. Ensure the amplifier is switched OFF before you make any connections.

Connect the cables from the left speaker to the amplifier’s left channel output terminals, and the cables from the right speaker to the amplifier’s right channel output terminals. Ensure that the cable wires marked “positive” or coloured red are connected to the positive amplifier output terminals, and wires marked “negative” or coloured black are connected to the negative amplifier output terminals.

Diagram 2: Connecting your speakers



6. Using your speakers

Now that your DALI KORE speakers are installed in your listening space and connected to one or more amplifiers, the next step is to start enjoying them. So, find your favourite music, take a seat and get ready to rediscover your music collection.

The front grille

The magnetic front grille is located in a separate compartment of the shipping crate. To attach the grille, carefully move it close to the front baffle until the magnets pull it into position. To remove the grille, carefully pull its top to loosen it and then take it off.

Running in

Your DALI KORE speakers will experience a “running-in” period before they perform optimally, especially if they have been exposed to prolonged low temperatures during shipping or storage. Although the running-in period will vary depending on the intensity of use and playback volume, you should expect your DALI KORE speakers to perform at their best after up to 100 hours of use. Unlike many other mechanical devices, the lifespan of a speaker will increase with regular use.

Precautions

If your amplifier is able to deliver enough power, your DALI KORE speakers are capable of extremely high volume levels. Please remember that listening to music for extended periods at high volume can damage your hearing. Also, be considerate of those you live with and others nearby. If the sound from your DALI KORE speakers becomes distorted, this is a sure sign that your amplifier is running out of power. To avoid damaging your speakers or amplifier, reduce the volume until the music no longer distorts.



DALI KORE Manual

7. Cleaning and maintenance

Your DALI KORE speakers need no special maintenance or care and should be treated as any other valuable item of furniture in your home. Remove dust from the cabinets with a soft dry cloth, and clean them using a soft damp cloth with a mild all-purpose, non-abrasive household cleaning agent. Use caution when dusting the bass or midrange driver cones as they are extremely fragile. We also recommend that you avoid touching the tweeter dome and ribbon tweeter altogether.

Finally, if a speaker becomes marked or damaged, your DALI KORE retailer can arrange to have it serviced or replaced.

8. Disposal

If you want to dispose of your DALI KORE speakers, don't mix them with your general household waste. In accordance with EU legislation, a separate collection system for used electronic products enables private households in EU member states, Switzerland, Liechtenstein and Norway to return used electronic products free of charge to designated collection facilities or to a retailer (if you purchase a similar replacement product). If you reside in a country not mentioned above, please contact your local authorities to determine the correct method of disposal and prevent any potential negative effects on the environment and human health.



DALI KORE Manual

9. DALI KORE Specifications

Frequency Range (+/- 3 dB)	26 Hz – 34 kHz
Sensitivity	88 dB @ 2.83 volts
Nominal Impedance	4 Ohm
Minimum Impedance	3.2 Ohm @ 72 Hz
Recommended Amplifier Power	50 - 1,000 watts
Maximum SPL	118 dB
Bass Drivers	2 × 11½ inch Balanced Drive SMC
Midrange Driver	7 inch Balanced Drive SMC
Hybrid High Frequency Driver	35 mm soft textile dome
Hybrid Super High Frequency Driver	10 × 55 mm ribbon
Crossover Frequencies	390/2,100/12,000 Hz
Low Frequency Enclosure Type	2 × 72 litre reflex loaded
Reflex Tuning Frequency	22 Hz
Midrange Frequency Enclosure Type	Attenuated open back line
Enclosure Construction	Curved 28 mm birch laminate composite with aluminium die-cast, thermoset resin and cast composite structural elements
Enclosure Finishes	Gloss Lacquer Ammara Ebony veneer with contrasting textured finishes
Connections	Custom designed, machined and gold-plated terminals suitable for bare wires, spade terminals and 4 mm plugs. Bi-wire/Bi-amp capable
Dimensions (H × W × D)	1,675 x 448 x 593 mm 66 × 17.6 × 23.3 inches
Weight	148 kg
Shipping Dimensions (H × W × D)	1,950 × 800 × 1,200 mm 76.7 × 31.4 × 47.2 inches
Shipping Weight	246 kg

The information provided in this manual is subject to change without notice.