


# HOME COLLECTION

2022



HANDCRAFTED IN FRANCE  
HEADPHONES





For more than four decades, Focal has created speaker drivers and high-end loudspeakers that deliver a unique sound. Our brand values are innovation and performance; excellence and pleasure. We are globally renowned for our exclusive technologies. The result of this technological heritage is class-leading products offering a natural, authentic performance, imbued with clarity and power. Our handcrafted headphone collection combines this outstanding listening experience with exquisite, high-quality design, for an all-round luxury sensation.





# OPEN-BACK HEADPHONES

**Ultimate listening experiences at home**

Utopia and Clear Mg are high-fidelity headphones with an open-back design, offering exceptional audio reproduction thanks to their latest generation speaker drivers with no restriction: completely free, the sound is pure and sensational. Their carefully selected finishes, meticulous detailing and fine materials augment the elegance of Utopia and Clear Mg, enhancing your listening pleasure.

# CLOSED-BACK HEADPHONES

**Sound immersion**

Our engineers have used cutting-edge techniques to bring the best aspects of open-back headphone performance to closed-back design. Stellia and Celestee incorporate speaker drivers capable of working within a limited space, while offering perfect soundproofing and exceptional listening quality. They perfectly illustrate the brand's refusal to compromise, finished with a touch of French sophistication.



**01.**  
UTOPIA

9



**02.**  
STELLIA

15



**03.**  
CLEAR MG

21



**04.**  
CELESTEE

27



**05.**  
RADIANCE

33



**06.**  
UNITI

39

---

# 01. UTOPIA

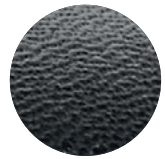
Pure sound at its finest

Utopia are Focal's flagship headphones. Thanks to their innovative speaker drivers, the listening experience is stunningly realistic. The leather, as well as the woven carbon fibre of the headband, lend an elegant touch to the high-performing, highly comfortable Utopia. The honeycomb grilles and the Black Chrome ring highlight subtle details of the design, such as the 'Yin and Yang' on the exterior of the earcup, which represents the perfect harmony between high technology and design.

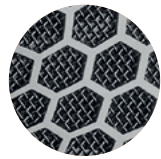
---



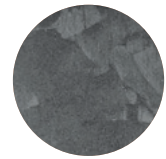




Real  
leather



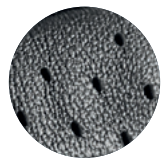
Black Chrome  
finish



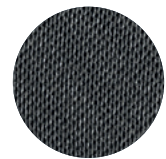
Forged,  
recycled carbon



Unrivalled  
open design



Leather  
earpads



Woven  
carrying case







# UTOPIA

Over-ear open-back headphones

Impedance	80Ω
Sensitivity	104dB SPL / 1mW @ 1kHz
Frequency response	5Hz – 50kHz
THD	<0.2% @ 1kHz / 100dB SPL
Speaker driver	1.6" (40mm) pure Beryllium 'M'-shaped dome
Weight	1.08lb (490g)
Cables and connectors	<ul style="list-style-type: none"><li>• 1 x 5ft (1.5m) cable with 1/8" (3.5mm) unbalanced Jack connector &amp; Lemo® connectors</li><li>• 1 x 9.8ft (3m) balanced 4-pin XLR cable &amp; Lemo® connectors</li><li>• 1 x Jack adapter 1/8" (3.5mm) female – 1/4" (6.35mm) male</li></ul>
Carrying case	9.8x9.4x4.7" (25x24x12cm)



HANDCRAFTED  
IN FRANCE





---

## 02. STELLIA

Pure sound everywhere

Each Stellia component is developed in the pursuit of excellence and refinement, down to the full-grain leather of the headband, the beautifully styled earcups and the ultra-comfortable earpads. The full-range driver, with its 'M'-shaped pure Beryllium dome, combines an array of Focal innovations – together they deliver an incredible listening experience. Stellia pushes the acoustic boundaries of the very best closed-back headphones and stands out as the reference model in its class.

---







Full-grain  
leather



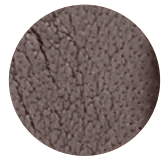
Cognac  
finish



Solid  
Aluminium



Focal  
signature



Mocha  
finish



Woven  
carrying case







# STELLIA

Over-ear closed-back headphones

Impedance	35Ω
Sensitivity	106dB SPL / 1mW @ 1kHz
Frequency response	5Hz - 40kHz
THD	0.1% @ 1kHz / 100dB SPL
Speaker driver	1.6" (40mm) pure Beryllium 'M'-shaped dome
Weight	0.96lb (435g)
Cables and connectors	<ul style="list-style-type: none"><li>• 1 x 4ft (1.2m) cable with 1/8" (3.5mm) unbalanced Jack connector</li><li>• 1 x 9.8ft (3m) balanced 4-pin XLR cable</li><li>• 1 x Jack adapter 1/8" (3.5mm) female - 1/4" (6.35mm) male</li></ul>
Carrying case	9.8x9.4x4.7" (25x24x12cm)



HANDCRAFTED  
IN FRANCE





---

# 03.

## CLEAR MG

Experience excellence

Thanks to their Magnesium drivers, fully open at the back, Clear Mg headphones reveal the smallest details of your music with precision and finesse. You'll even forget you're wearing them... The solid aluminium yoke offers pure, seamless design. The exterior of the earcups features a honeycomb pattern for yet more sophisticated elegance, enhanced further by the Chestnut and Mixed-Metals finish, as well as the genuine leather and microfibre earpads.

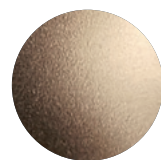
---



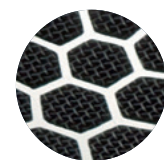




Semi-aniline  
leather



Chestnut & Mixed-Metals  
finish



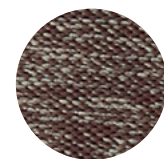
Honeycomb  
grille



Focal  
signature



Perforated  
microfibre



Woven  
carrying case







# CLEAR MG

Over-ear open-back headphones

Impedance	55Ω
Sensitivity	104dB SPL / 1mW @ 1kHz
Frequency response	5Hz - 28kHz
THD	0.25% @ 1kHz / 100dB SPL
Speaker driver	1.6" (40mm) 'M'-shaped Magnesium dome
Weight	0.99lbs (450g)
Cables and connectors	<ul style="list-style-type: none"><li>• 1 x 3.9ft (1.2m) cable with 1/8" (3.5mm) unbalanced Jack connector</li><li>• 1 x 9.8ft (3m) balanced 4-pin XLR cable</li><li>• 1 x Jack adapter 1/8" (3.5mm) female - 1/4" (6.35mm) male</li></ul>
Carrying case	9.8x9.4x4.7" (25x24x12cm)



HANDCRAFTED  
IN FRANCE





---

# 04.

## CELESTEE

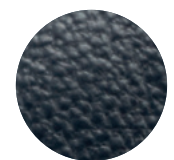
**Reveal the intensity of every moment**

Enjoy a listening experience without a noisy environment disturbing your pleasure or worrying about annoying the person next to you: this is the promise made and kept by Celestee. Thanks to its drivers, Celestee delivers audio quality without compromise, with outstanding soundproofing and comfort. Precision and balance define the sound reproduction, while elegance embodies the design. Lastly, the Navy Blue finish and carefully selected materials further refine these headphones.

---







Semi-aniline  
leather



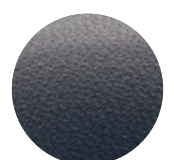
Soft Copper  
finish



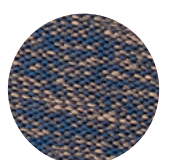
Solid  
Aluminium



Stainless  
steel grille



Navy Blue  
finish



Woven  
carrying case







# CELESTEE

Over-ear closed-back headphones

Impedance	35Ω
Sensitivity	105dB SPL / 1mW @ 1kHz
Frequency response	5Hz - 23kHz
THD	0.1% @ 1kHz / 100dB SPL
Speaker driver	1.6" (40mm) Aluminium/Magnesium 'M'-shaped dome
Weight	0.95lb (430g)
Cables and connectors	<ul style="list-style-type: none"><li>• 1 x 4ft (1.2m) cable with 1/8" (3.5mm) unbalanced Jack connector</li><li>• 1 x Jack adapter 1/8" (3.5mm) female - 1/4" (6.35mm) male</li></ul>
Carrying case	9.8x9.4x4.7" (25x24x12cm)



HANDCRAFTED  
IN FRANCE





---

# 05. RADIANCE

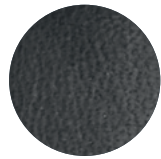
## Bentley Special Edition

Focal for Bentley Radiance closed-back headphones are a special edition created in honour of the partnership between Focal, Naim Audio and prestigious car manufacturer, Bentley Motors. Engineers and designers have worked together to develop these high-end and elegant headphones. Authentic, refined Bentley touches are added with Copper finishes and Diamond motifs: every detail has been considered, making Radiance a collector's item.

---



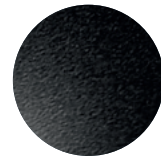




Full-grain  
leather



Bentley  
special edition



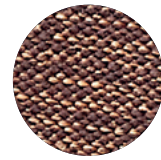
Solid  
Aluminium



Diamond  
motifs



Copper  
finishes



Woven  
carrying case







# RADIANCE

Over-ear closed-back headphones

Impedance	35Ω
Sensitivity	105dB SPL / 1mW @ 1kHz
Frequency response	5Hz - 23kHz
THD	0.1% @ 1kHz / 100dB SPL
Speaker driver	1.6" (40mm) Aluminium/Magnesium 'M'-shaped dome
Weight	0.96lb (435g)
Cables and connectors	<ul style="list-style-type: none"><li>• 1 x 4ft (1.2m) cable with 1/8" (3.5mm) unbalanced Jack connector</li><li>• 1 x Jack adapter 1/8" (3.5mm) female - 1/4" (6.35mm) male</li></ul>
Carrying case	9.8x9.4x4.7" (25x24x12cm)



HANDCRAFTED  
IN FRANCE





---

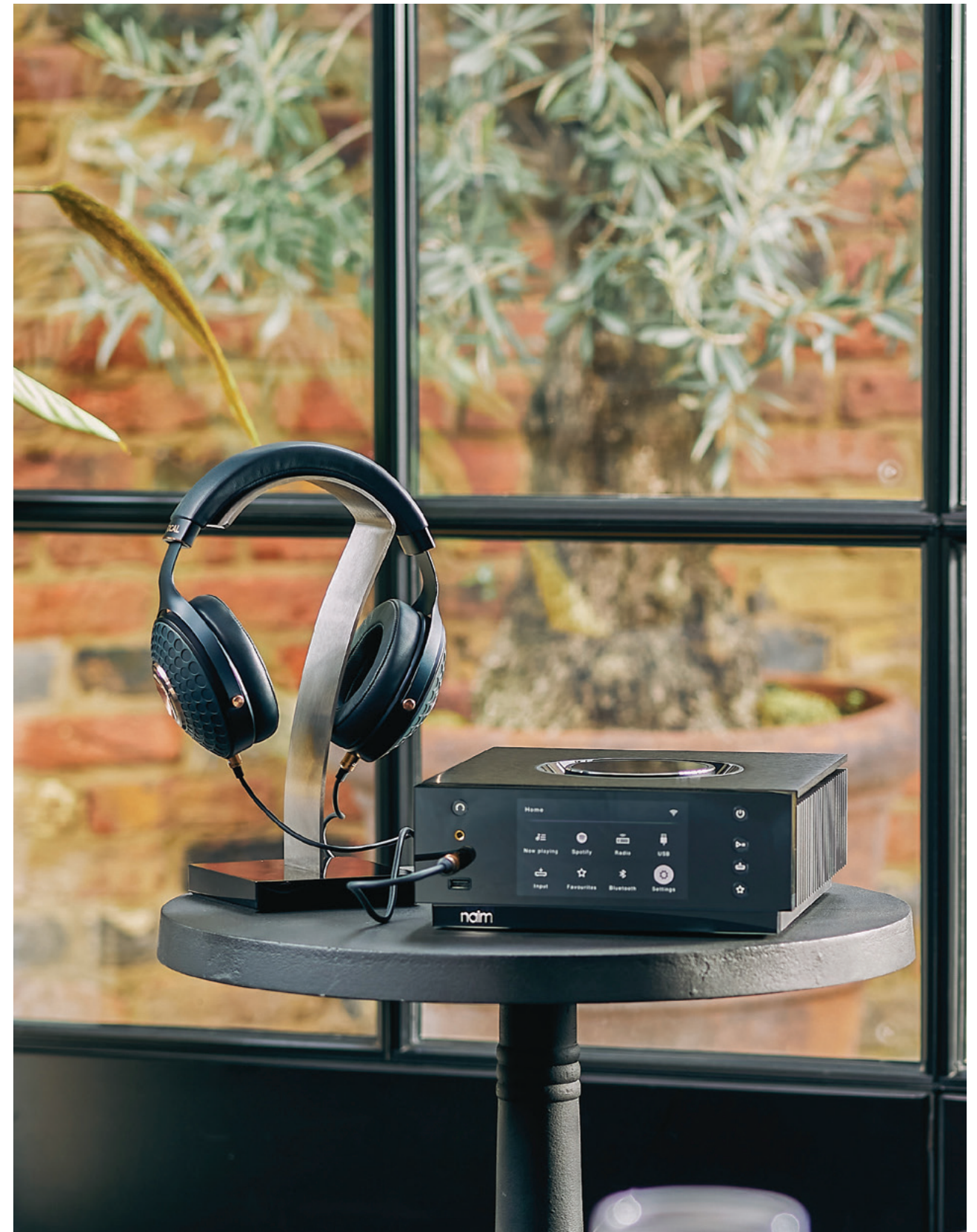
# 06.

## UNITI ATOM

### Headphone Edition

Built-to-last in Britain in the Naim workshops, Uniti Atom Headphone Edition is designed to be the ultimate solo listening source at home. This innovative all-in-one system combines beautiful design with stunning functionalities and all the streaming features you need (Qobuz, TIDAL, Spotify). Simply connect it to your wi-fi, plug in your favourite headphones and escape into a world of superior-quality music streaming, radio, podcasts and more.

---







Sleek volume wheel



High performance transformer



32bits/384kHz resolution



Multiple streaming services



All-in-one system



Digital and analogue inputs





# UNITI ATOM

Headphone Edition

Type	Streaming headphone amplifier	
Audio inputs	Digital	2 x Optical S/PDIF up to 96kHz, Coaxial RCA (up to 24bit/192kHz, DoP 64Fs)
	Analogue	1 x Stereo RCA pair
	USB	2 x USB 2.0 (Type A connector)
	Streaming	Apple AirPlay 2, Chromecast Built-in, UPnP™, Spotify® Connect, TIDAL, Roon Ready, Bluetooth®, Internet Radio, Qobuz
Headphone outputs	4.4mm Pentaconn (balanced) 4 pin XLR (balanced) 6.35mm (¼ inch) jack (unbalanced) 1.5W RMS per channel into 16ohms Suitable for headphones from 16Ω and upwards	
Audio outputs	Balanced XLR Preamp output RCA Preamp output Multiroom: Sync up to five Naim Streaming products and control via the Naim App	
Power	17W (typical use)	
Dimensions (HxWxD)	3.74x9.65x10.43" (9.5x24.5x26.5cm)	
Weight	15.4lbs (7kg)	



---

# ACCESSORY

## Headphones stand

Specifically designed for Focal headphones, this stainless steel stand is also available as part of our collection. Its stylish shape, reminiscent of the Focal flame logo, provides a simple, aesthetic storage solution for your headphones, while the sleek design is finished with laser engraving. Thanks to its Setapan® base, it ensures perfect stability.

---







## UTOPIA



'The Focal Utopia turn listening to music into a full-on experience'

GQ



'I consider this headphone a masterpiece'

HIFI +

'With Focal, engineering and craftsmanship always serves the art. Beautiful to behold, yes. But remarkable to listen to'

TONE



## CLEAR MG



'Everything about the Focal Clear Mg is close to perfect'

FORBES



'Clear Mg is masterful. Focal's promise of excellence is warranted'

HI-FI TRENDS



## STELLIA



'They are a slam dunk.'

THE ABSOLUTE SOUND



'Simply the best closed-back headphones we've heard'

WHAT HI-FI



## CELESTEE



'It really was love at first sight - and at first listen'

MOON AUDIO

'Easily the most subtly stunning-looking Focal headphone'

AUDIOHOLICS



'These closed-back headphones ooze sophistication and have sound quality to match with electrifying detail and timing'

BBC MUSIC



RADIANCE



'Focal has made a pair of headphones that sound as good as they look'

FORBES

'The French manufacturer Focal is no stranger to producing high-quality headphones, but I think the Radiance deserves its unique spot in their catalog'

MAJOR HIFI



'Focal has managed to create what I honestly believe is the price-to-performance champion in the high-end closed-back headphone category'

HEADFONIA



UNITI



'Naim's new Uniti Atom Headphone Edition is just perfect for private listening'

FORBES



'Luxury-tier quality in hardware, design and sound, built to keep pace with the best headphones made today'

AUDIOHOLICS

'You really get the Naim sound, now delivered straight to your ears'

HI-FI.NL

---

# COLLECTIONS

Combining performance and design, Focal's collections are a revelation, awakening the emotions. And it doesn't matter where you are. At home with hi-fi and in-wall/in-ceiling loudspeakers, Home Cinema systems and open-/closed-back headphones; on the go with in-car kits; during travel with Bluetooth® Noise Cancelling Headphones; in the studio with monitors and at sea with specialist yacht solutions.

---



Home Collection



Motorities Collection



Professional Collection



---

# FOCAL *Powered by* naim

Enjoy an incredible sound experience

Find our products in 10,000 retail partner stores across the world, but also in our Focal Powered by Naim shops. These stores, dedicated to our brands, invite you to dive into our world, our savoir-faire and immerse yourself in the Focal & Naim sound.

## ASIA

Bengaluru - Guangzhou  
Seoul Gangnam-gu  
Seoul Hanam  
Taipei

## AUSTRALIA

Adelaide - Melbourne  
Perth - Sydney

## EUROPE

Cannes - Lyon  
Perpignan  
Berlin - Bad Schwartau  
Sevenoaks  
Prague  
Bucarest  
Vilnius

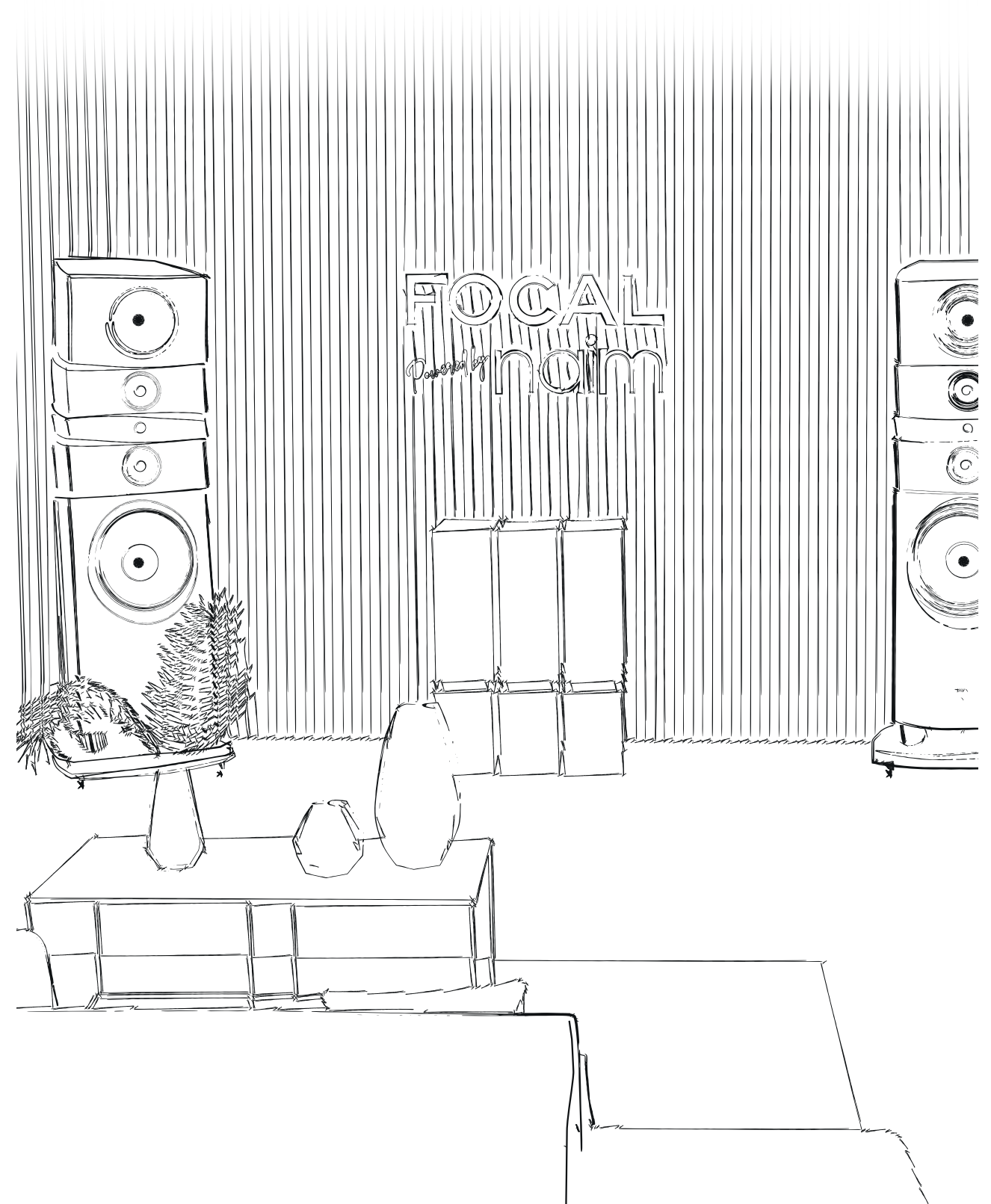
## CANADA

Barrie - Lethbridge  
Saskatoon  
Winnipeg

## USA

Austin  
Houston  
Miami

---





For more information, scan the QR code  
or find us at:

**[www.focal.com](http://www.focal.com)**



Focal JMLab®

BP 374 - 108, rue de l'Avenir - 42353 La Talaudière cedex - France - +33 (0) 477 435 700

Focal® is a registered trademark of Focal JMLab®, Naim® is a registered trademark of Naim Audio®.

Due to constant technological advances, Focal JMLab® and Naim Audio® reserve the right to modify prices and specifications without notice.

Non-binding pictures. Pictures : L'Atelier Sylvain Madelon / p.47-49: Die Frau / Envato Elements. SCAA/15/09/2022 - v3

